



535 Stranraer Avenue, East Albury



## Popular Old East Albury

Quietly located overlooking a local park in Old East Albury, this neat and tidy red brick home offers exceptional potential and boundless possibilities (STCA) to live in or invest. With period style interiors, the home offers an open plan kitchen / meal area, formal lounge with gas heating, timber floor boards, high ceilings, 2 bedrooms and a sunroom at the rear.

Located within strolling distance of Albury's shops and popular caf?s, the home is situated on a corner block and is an ideal investment for those looking to buy now and renovate or redevelop in the future.

### LOCATION

If Albury/Wodonga needed to be defined in a single word, it would be 'progressive'. With a combined catchment population of more than 170,000 people, Albury/Wodonga is home to a bustling economy, world-class medical services, a vibrant cultural scene and sporting amenit

**\$270,000**

**Type:** House  
**Sold Date:** 13/09/2019  
**Land:** 375 m2  
**Carparks:** 1



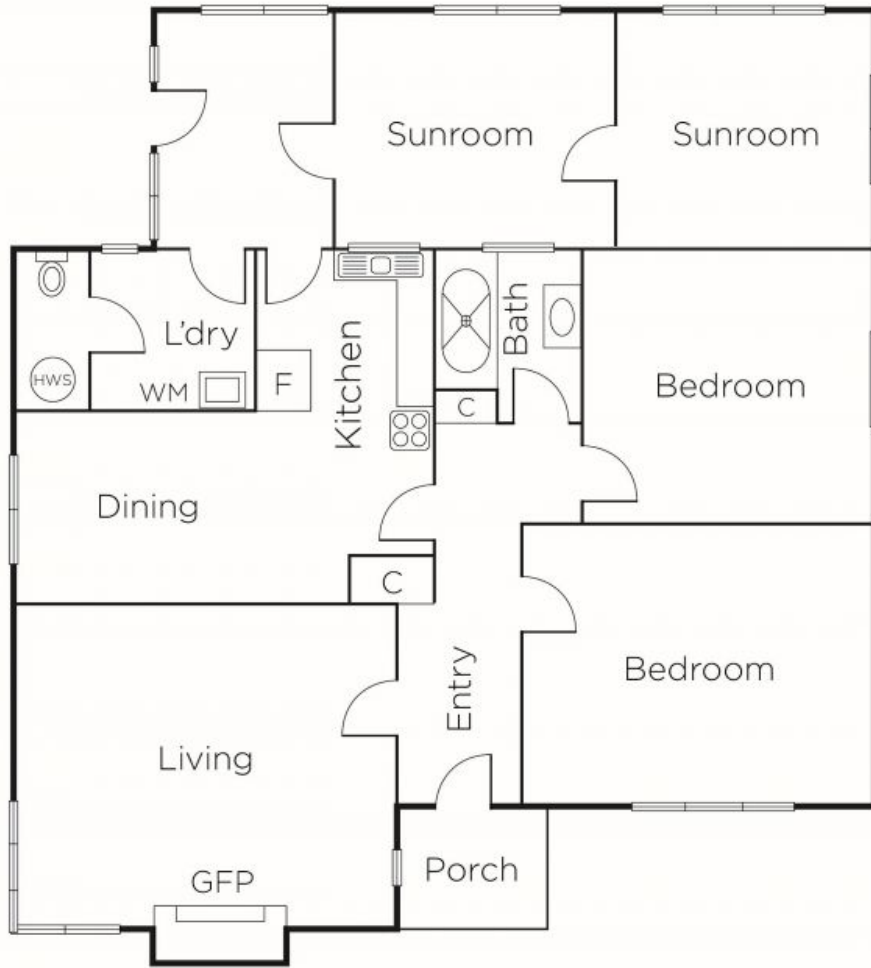
**Andrew Papallo**

0408 441 224

**Jess Murfitt**

0400 010 892

## 535 Stranraer Avenue, East Albury



Every care has been taken to verify the accuracy of details in this brochure. All measurements are approximate and prospective purchasers are requested to take such action as is necessary to satisfy themselves of any pertinent matters.

Not to scale